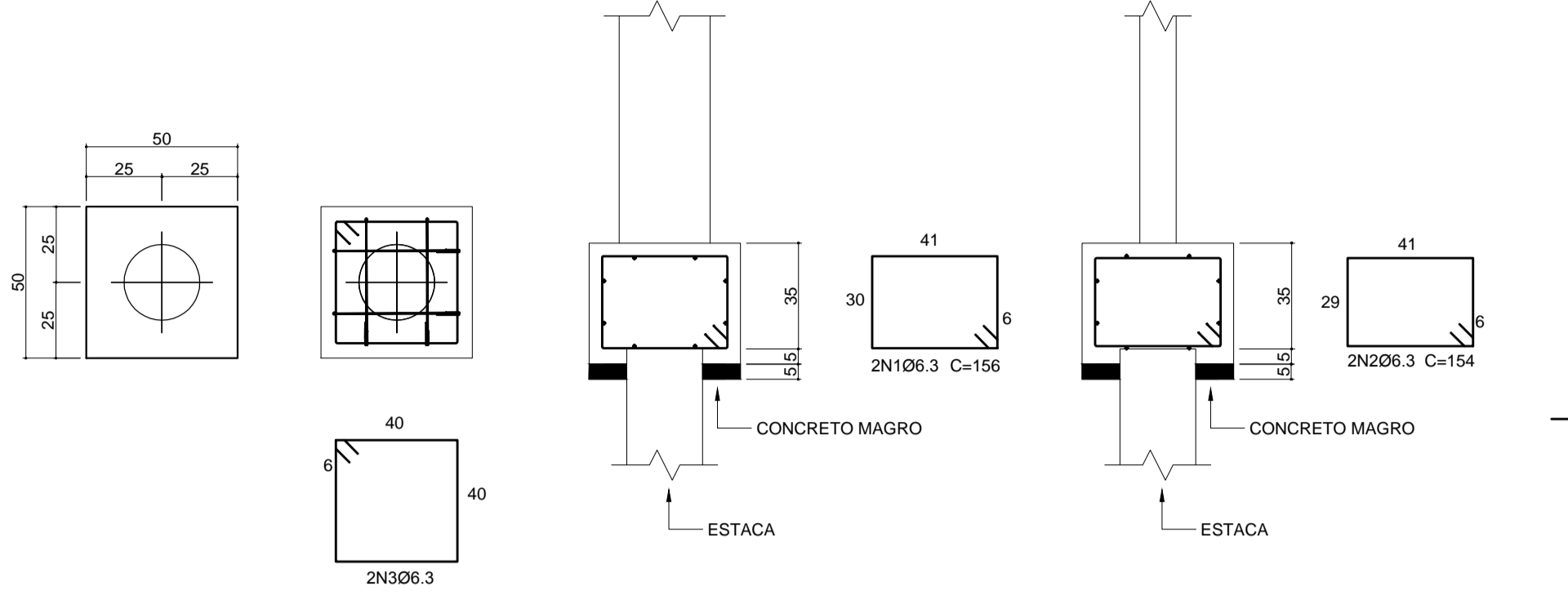
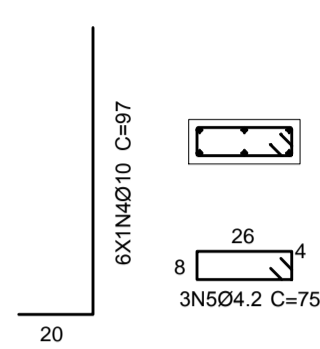


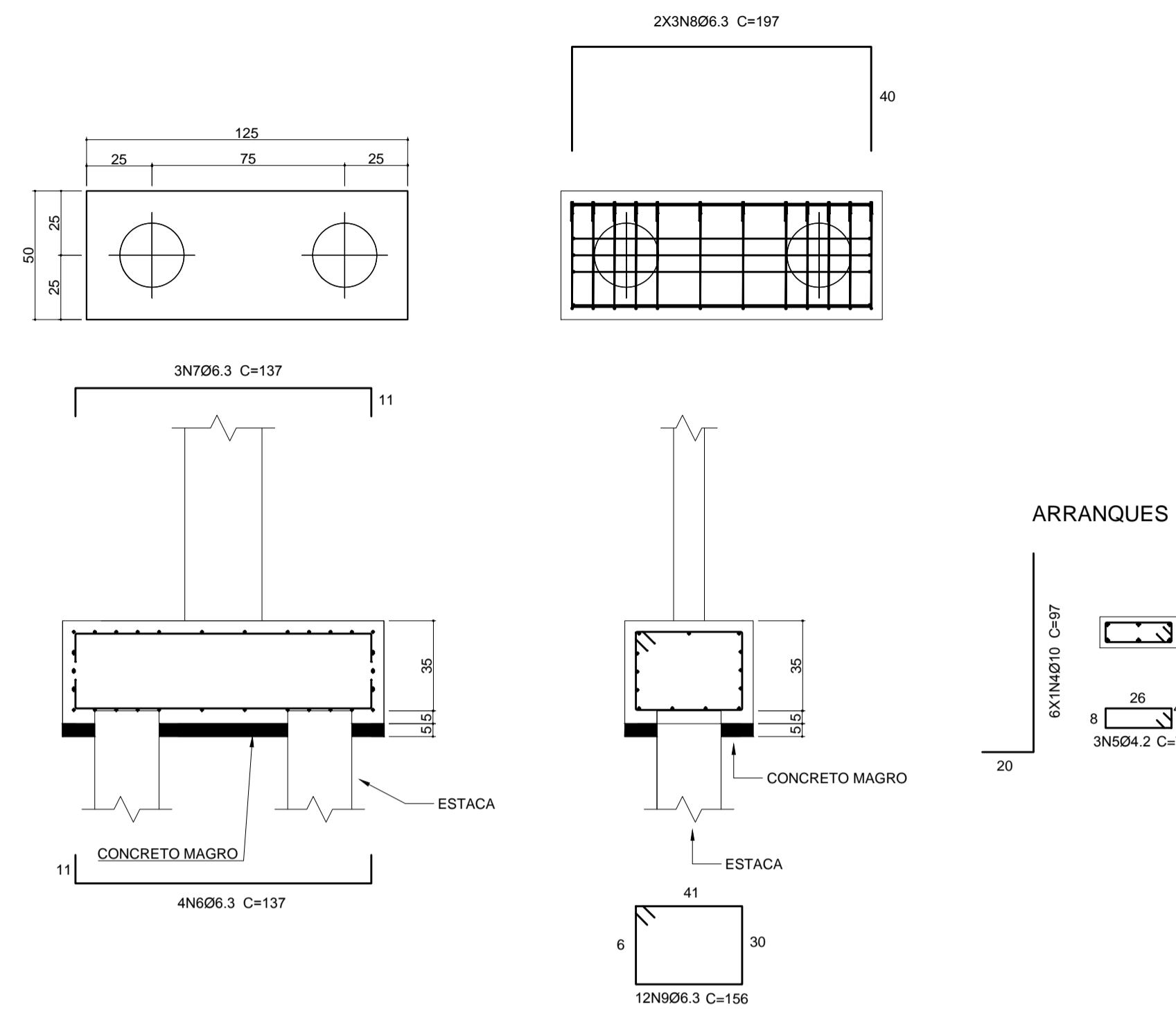
BLOCO B01 - 4x
Escala 1:20



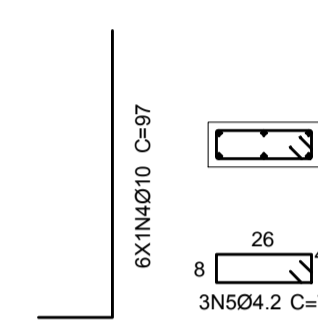
ARRANQUES



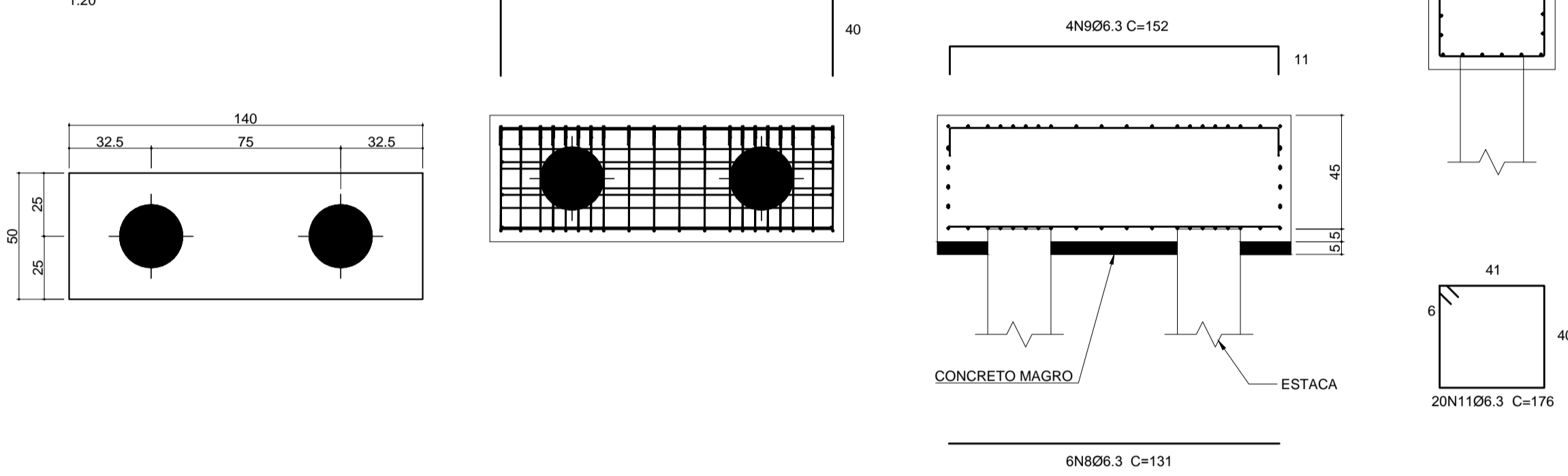
BLOCO B02 - 2x
Escala 1:20



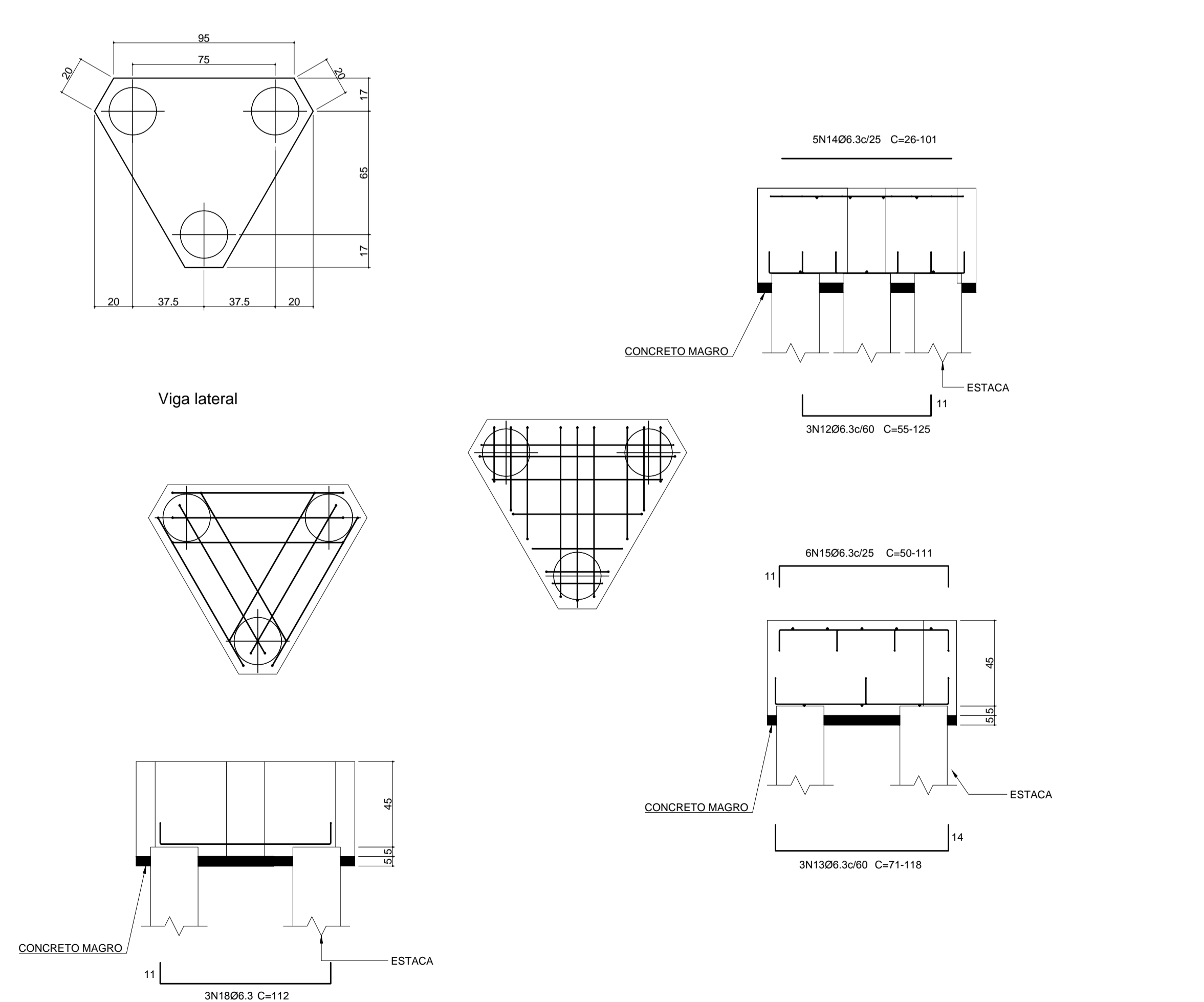
ARRANQUES



BLOCO B03 - 2x
Escala 1:20

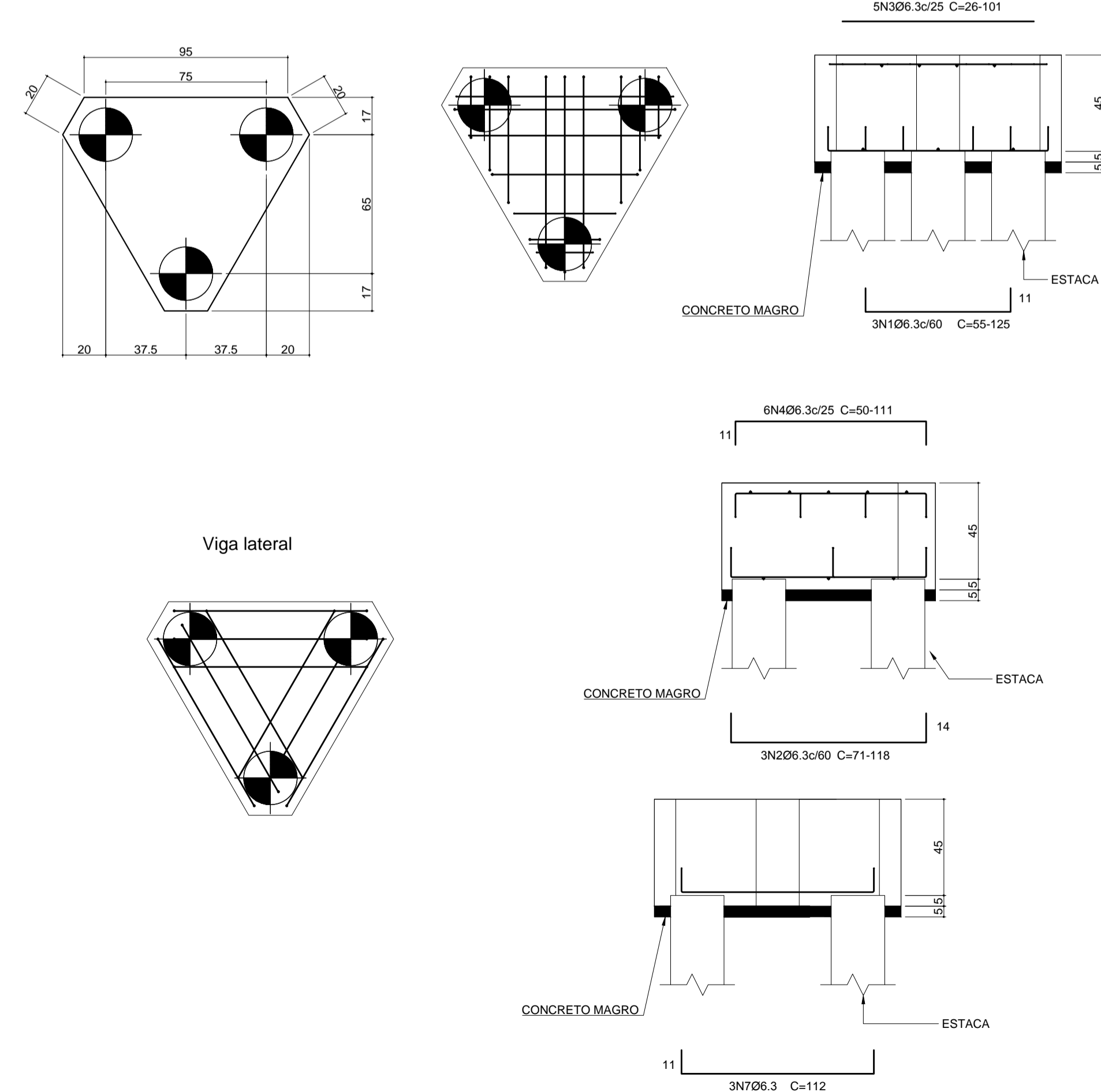


BLOCO B04 - 8x
Escala 1:20



Viga lateral

BLOCO B05 - 2x
Escala 1:20



Viga lateral

Elemento	Pos.	Diam.	Q.	Deb. (cm)	Reita (cm)	Deb. (cm)	Comp. (cm)	Total (cm)	CA-50 (kg)	CA-60 (kg)	
B1 (4x)	1	Ø6.3	2	156	156	156	312	0.8			
	2	Ø6.3	2	154	154	154	308	0.8			
	3	Ø6.3	2	173	173	173	346	0.8			
	4	Ø10	6	20	77	97	582	3.6		0.2	
	5	Ø4.2	3		75	75	225		6.6	0.8	
Total+10%: (x2):									26.4	0.8	
B2 (2x)	6	Ø6.3	4	115	115	115	460	1.3			
	7	Ø6.3	3	111	111	111	437	1.0			
	8	Ø6.3	6	197	197	197	788	2.9			
	9	Ø6.3	12	156	156	156	624	4.6			
	10	Ø10	6	20	77	97	582	3.6		0.2	
	11	Ø4.2	3		75	75	225		14.7	0.4	
Total+10%: (x2):									29.4	0.4	
B05 (2x)	1	Ø6.3	3	VAR.	VAR.	VAR.	270	0.7			
	2	Ø6.3	3	VAR.	VAR.	VAR.	261	0.6			
	3	Ø6.3	5	VAR.	VAR.	VAR.	335	0.8			
	4	Ø6.3	6	VAR.	VAR.	VAR.	486	1.2			
	5	Ø6.3	3	11	90	112	336	0.8			
	6	Ø6.3	3	11	90	112	336	0.8			
	7	Ø6.3	3	11	90	112	336	0.8			
Total+10%: (x2):									6.3	12.6	
B03 (2x)	8	Ø6.3	6	131	131	131	786	1.9			
	9	Ø6.3	4	111	111	111	444	1.5			
	10	Ø6.3	8	212	212	212	848	4.2			
	11	Ø6.3	20	176	176	176	704	8.6			
Total+10%: (x2):									17.8	35.6	
B04 (8x)	12	Ø6.3	3	VAR.	VAR.	VAR.	270	0.7			
	13	Ø6.3	3	VAR.	VAR.	VAR.	261	0.6			
	14	Ø6.3	5	VAR.	VAR.	VAR.	335	0.8			
	15	Ø6.3	6	VAR.	VAR.	VAR.	486	1.2			
	16	Ø6.3	3	11	90	112	336	0.8			
	17	Ø6.3	3	11	90	112	336	0.8			
	18	Ø6.3	3	11	90	112	336	0.8			
	Total+10%: (x8):									6.3	50.4
									Ø4.2:	0.0	1.2
									Ø10:	130.6	0.0
									Total:	154.4	1.2

DEPARTAMENTO ESTADUAL DE TRÂNSITO DE MATO GROSSO DO SUL
DIVISÃO DE ENGENHARIA, MANUTENÇÃO E INFRAESTRUTURA

OBRA: ENTRADA DA SEDE DETRAN MS | ESTRUTURAL

LOCAL: CAMPO GRANDE MS | ÁREA

AUTOR DO PROJETO: Eng. Bruno Oliveira Gonçalves (CREA 16312 D/MS) | PROPRIETÁRIO: DETRAN MS

TÍTULO: BLOCOS ARMAÇÕES | FOLHA: 04/14

ESCALA: 1/20 | DATA: 29/10/2017 | DESENHO: Eng. Bruno Oliveira | ALTERAÇÃO: 00