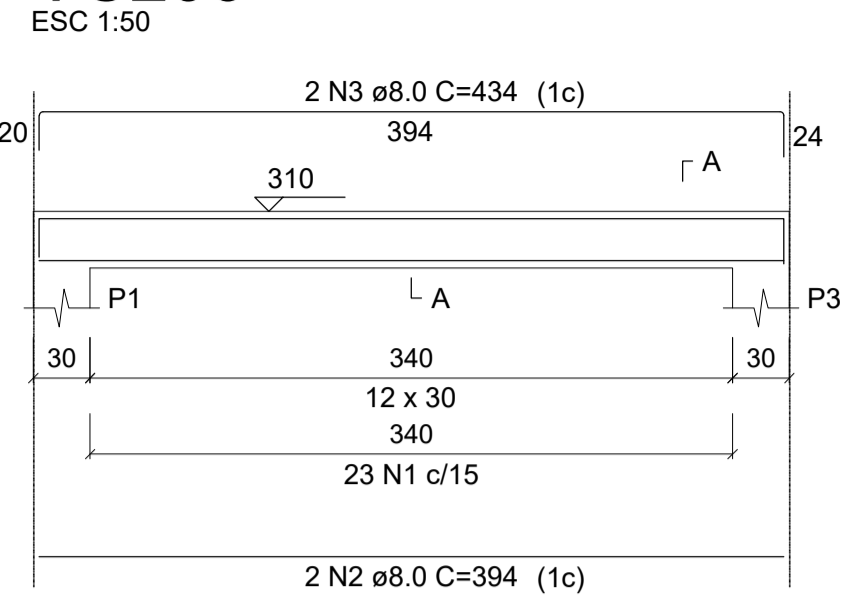
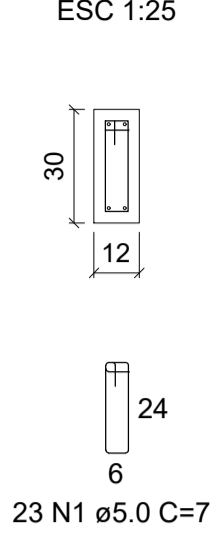


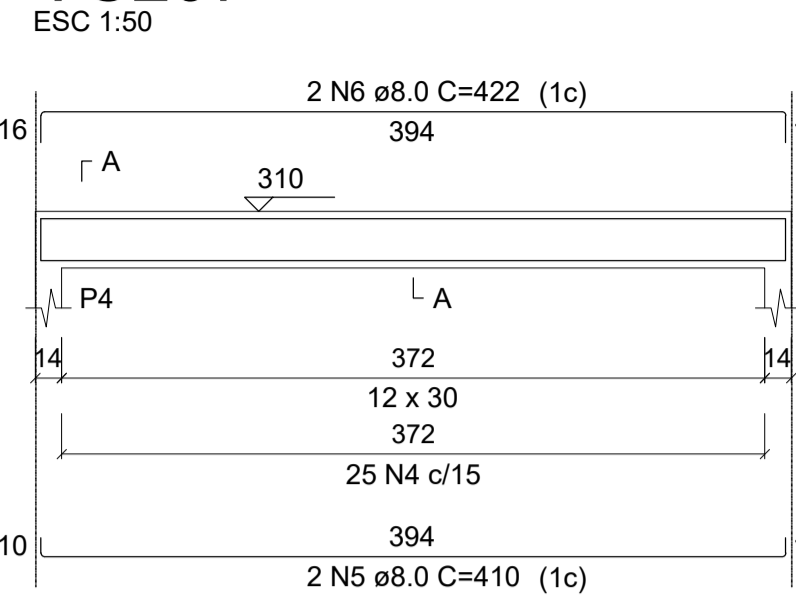
VC206



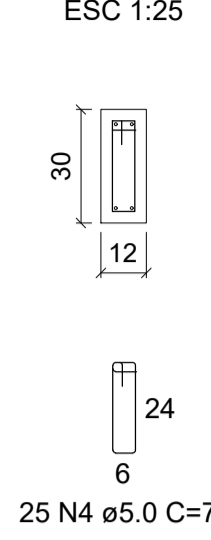
SEÇÃO A-A



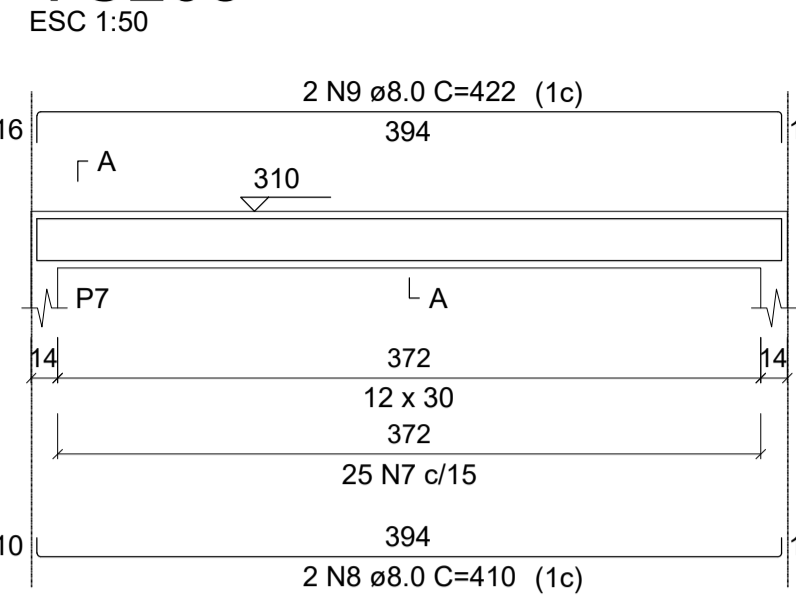
VC207



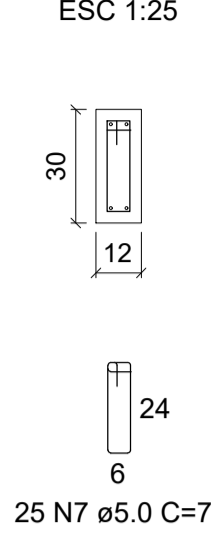
SEÇÃO A-A



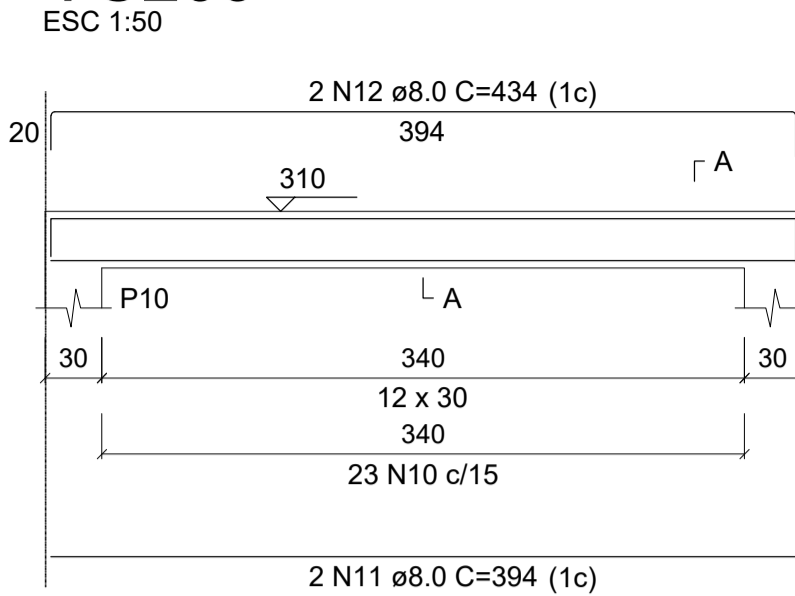
VC208



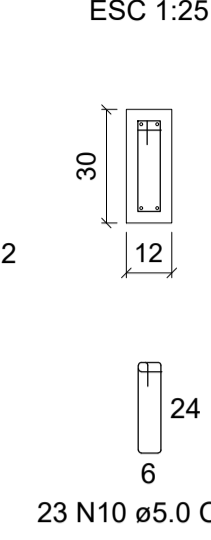
SEÇÃO A-A



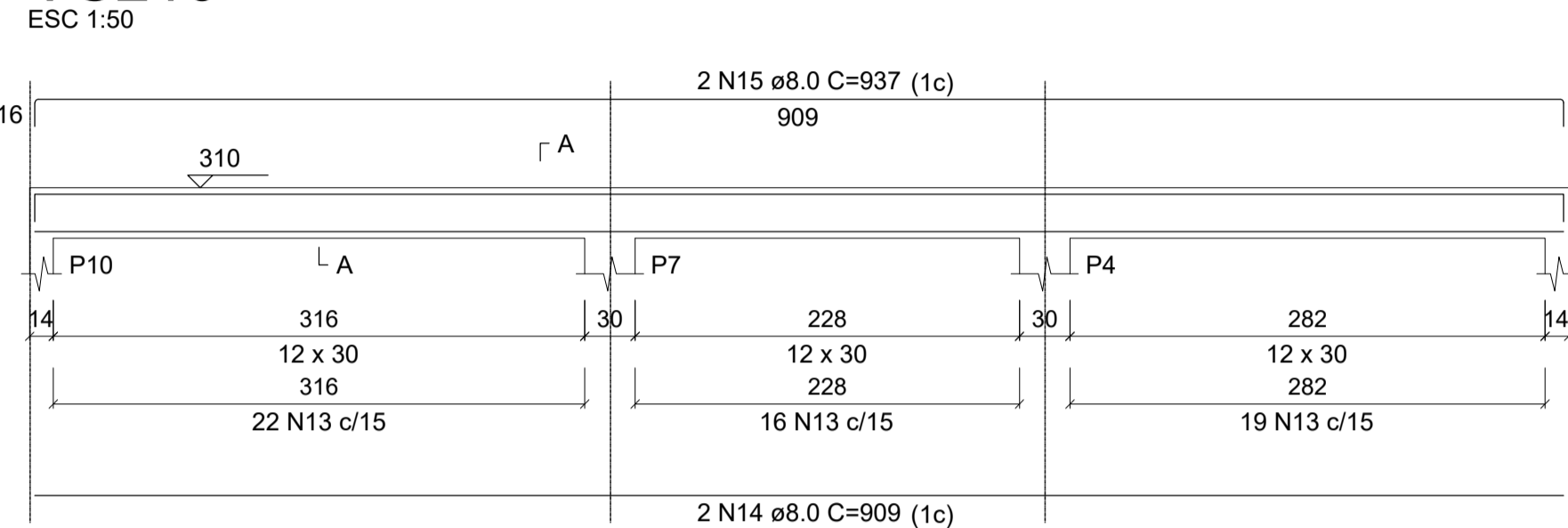
VC209



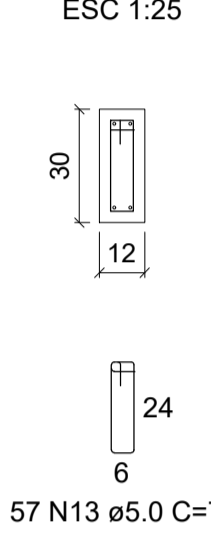
SEÇÃO A-A



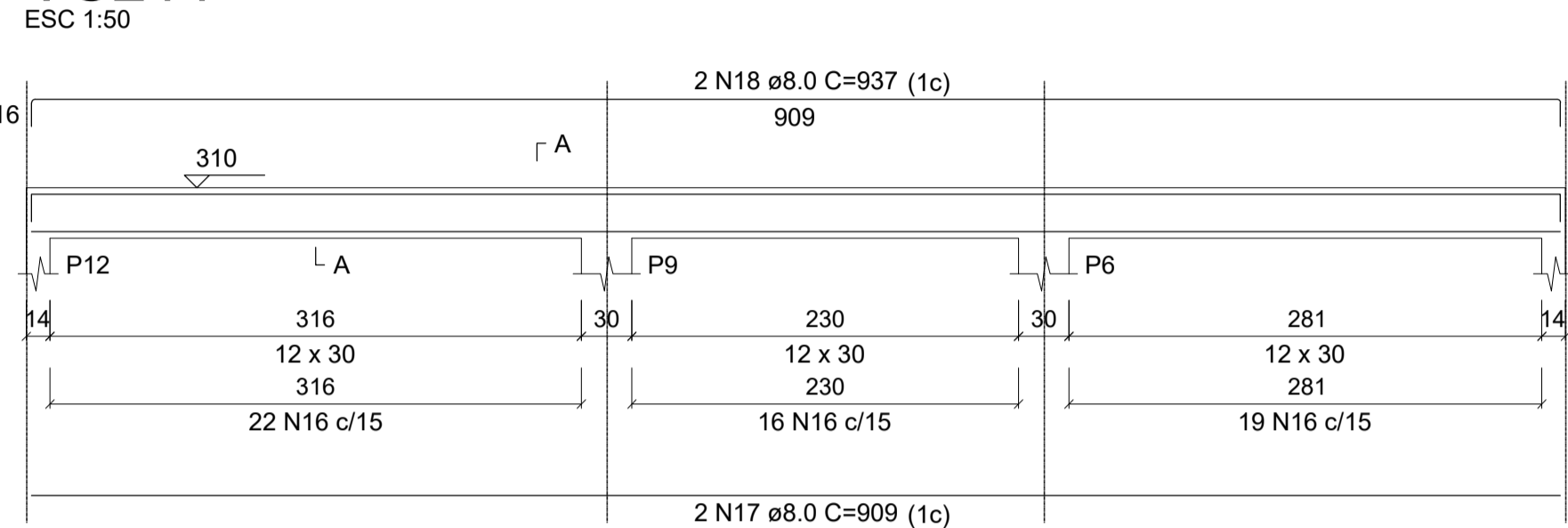
VC210



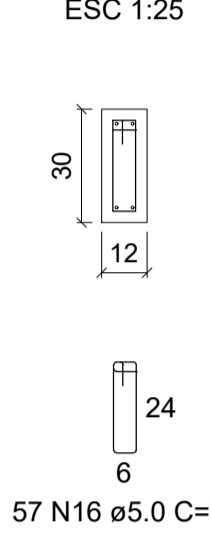
SEÇÃO A-A



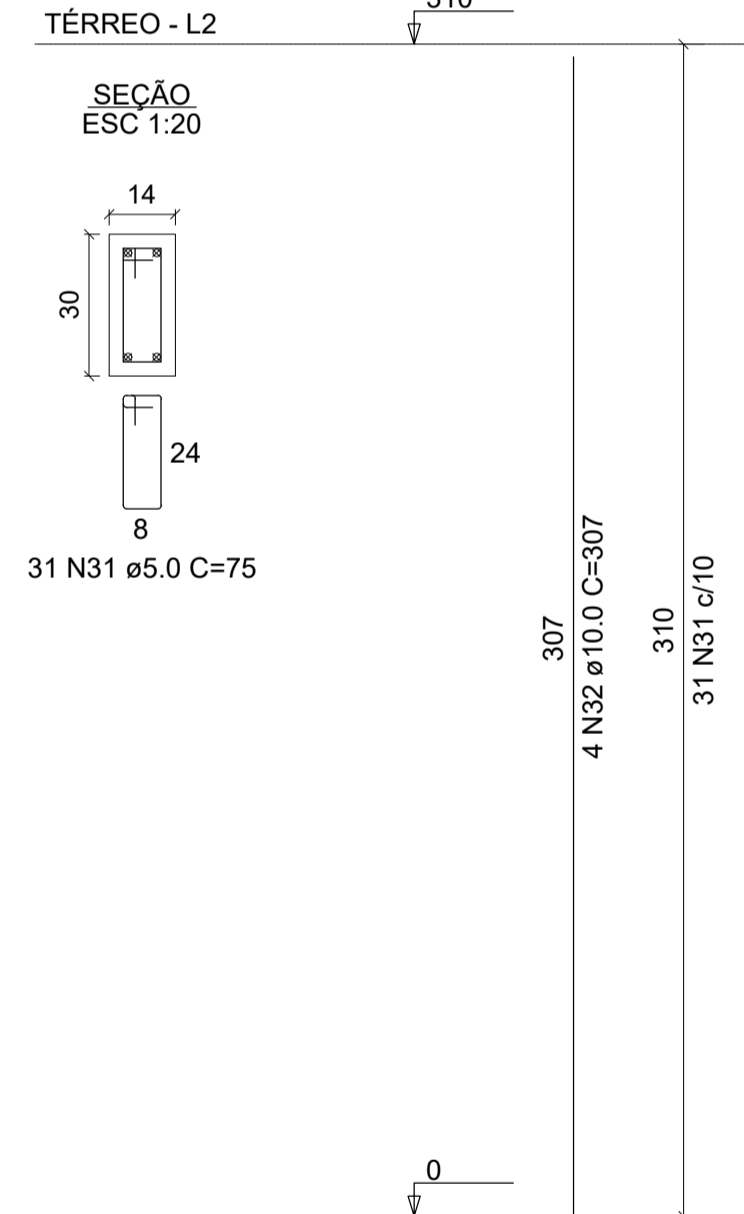
VC211



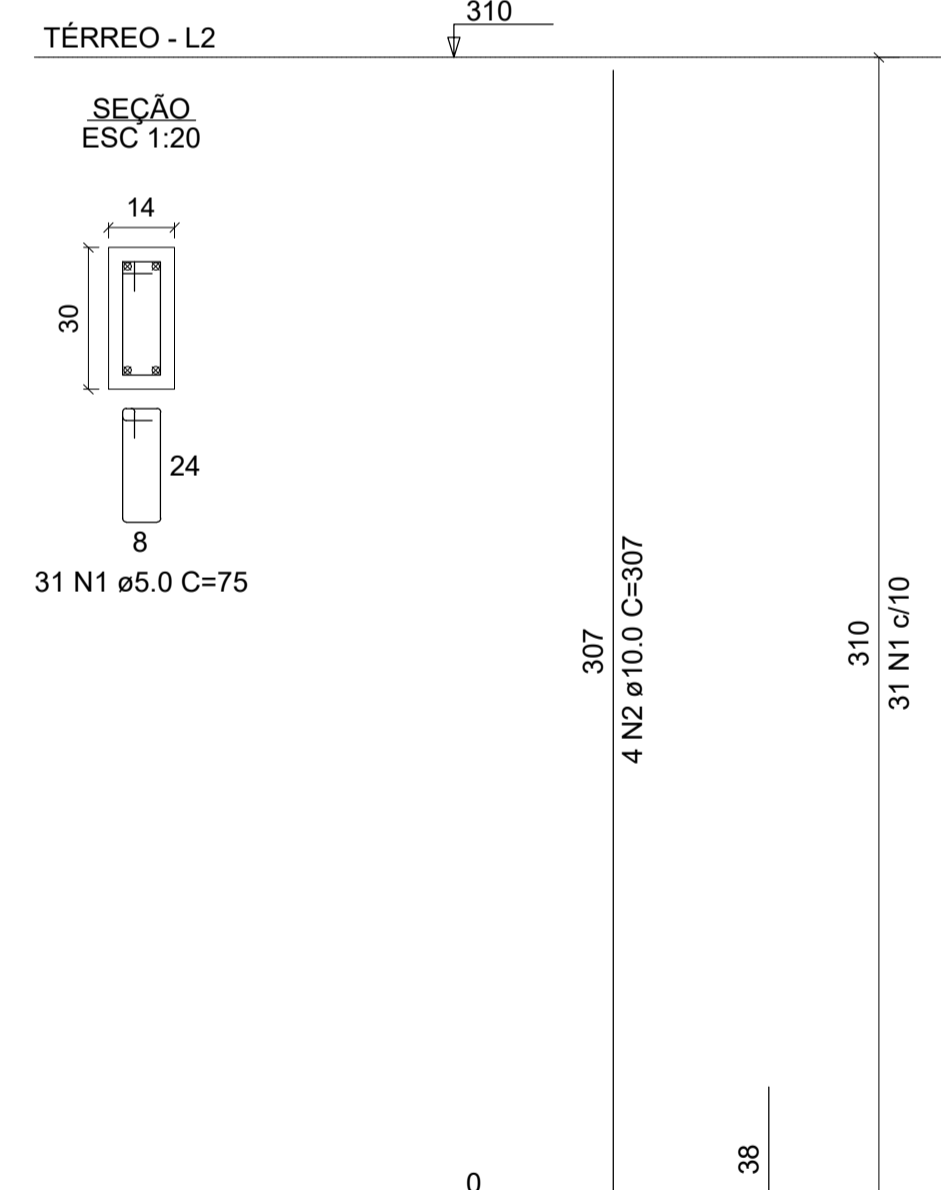
SEÇÃO A-A



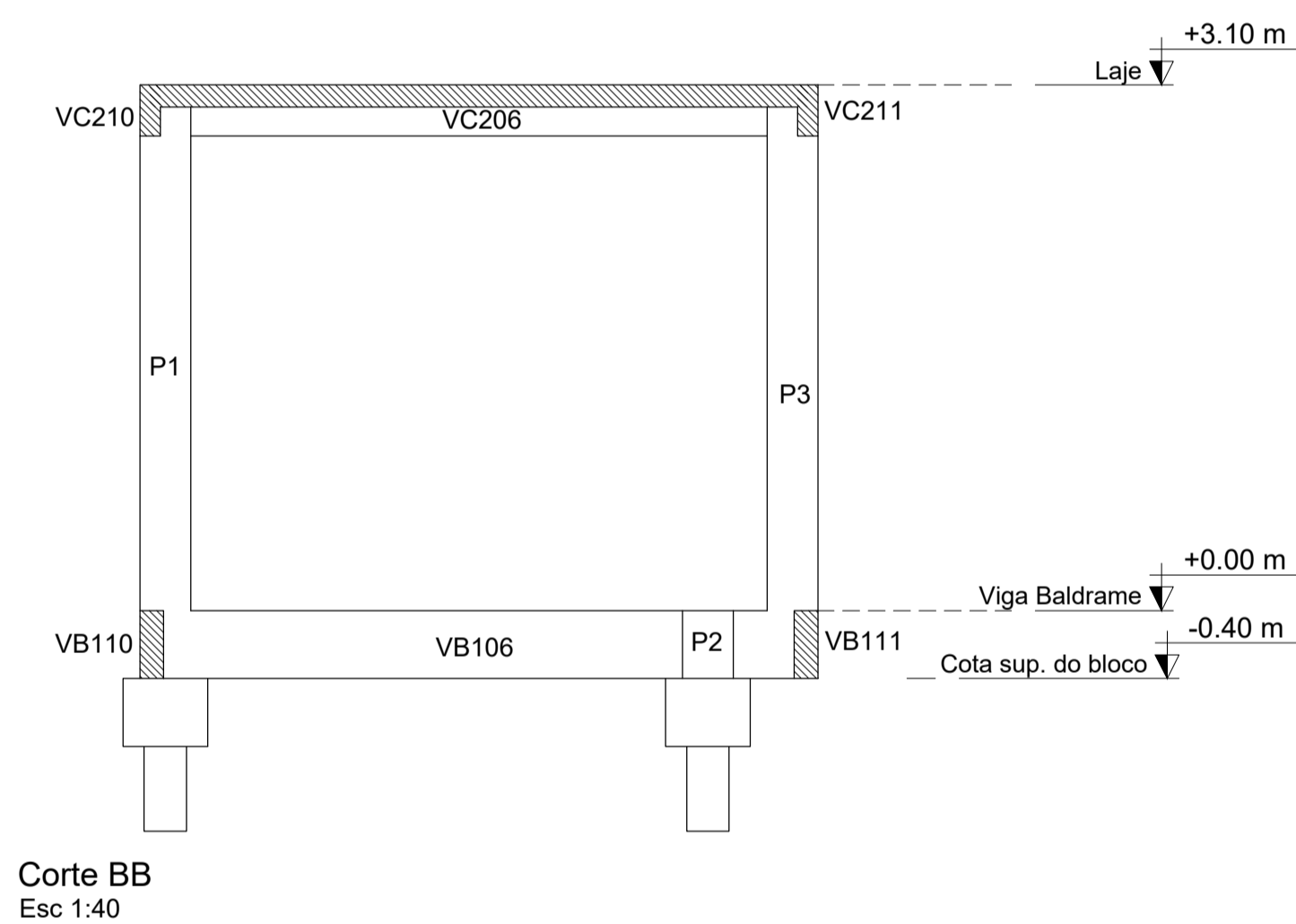
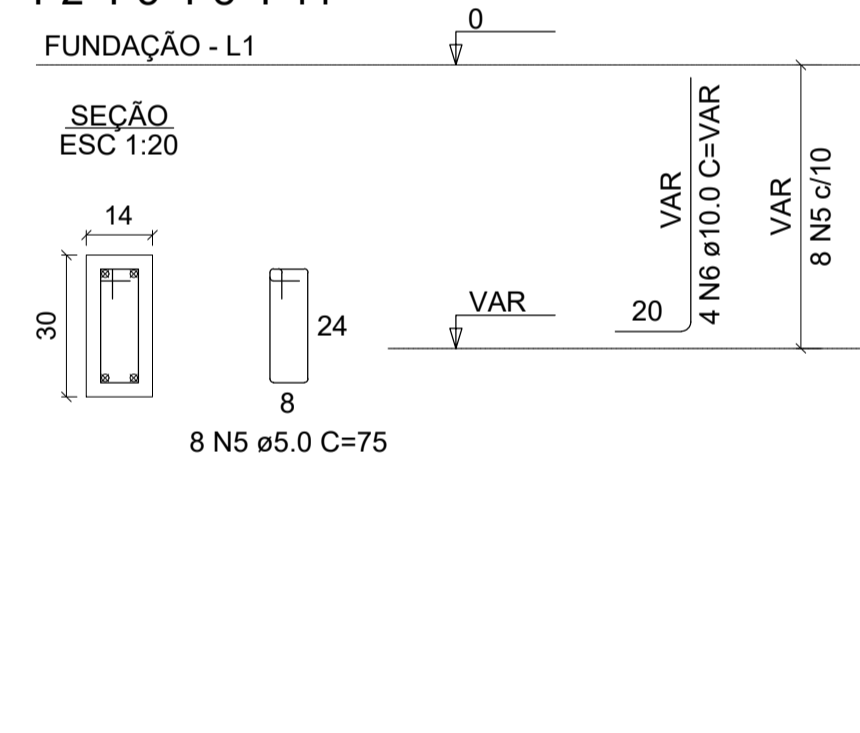
P3=P6=P9=P12



P1=P4=P7=P10

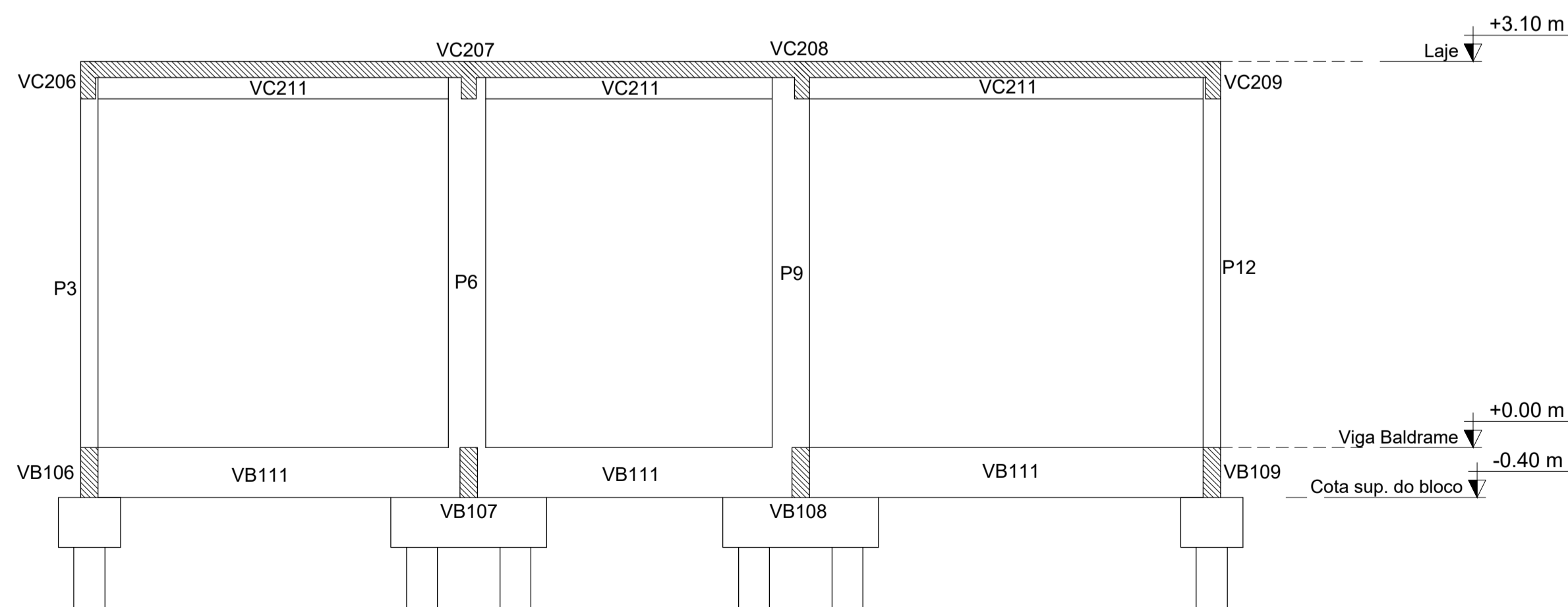


P2=P5=P8=P11



Corte AA

Esc 1:40



RELAÇÃO DO AÇO

ELEMENTO	AÇO	N	DIAM (mm)	QUANT	C.UNIT (cm)	C.TOTAL (cm)
VC206	CA60	1	5.0	23	71	1633
	CA50	2	8.0	2	394	788
	CA50	3	8.0	2	434	868
VC207	CA60	4	5.0	25	71	1775
	CA50	5	8.0	2	410	820
	CA50	6	8.0	2	422	844
VC208	CA60	7	5.0	25	71	1775
	CA50	8	8.0	2	410	820
	CA50	9	8.0	2	422	844
VC209	CA60	10	5.0	23	71	1633
	CA50	11	8.0	2	394	788
	CA50	12	8.0	2	434	868
VC210	CA60	13	5.0	57	71	4047
	CA50	14	8.0	2	909	1818
	CA50	15	8.0	2	937	1874
VC211	CA60	16	5.0	57	71	4047
	CA50	17	8.0	2	909	1818
	CA50	18	8.0	2	937	1874

RESUMO DO AÇO

AÇO	DIAM (mm)	C.TOTAL (m)	PESO + 10% (kg)
CA50	8.0	140.2	60.9
CA60	5.0	149.1	25.3
PESO TOTAL (kg)			
CA50		60.9	
CA60		25.3	

Volume de concreto (C25) = 1.20 m³
Área de forma = 23.86 m²


RELAÇÃO DO AÇO

ELEMENTO	AÇO	N	DIAM (mm)	QUANT	C.UNIT (cm)	C.TOTAL (cm)
P1-L2	CA60	1	5.0	31	75	2325
	CA50	2	10.0	4	307	1228
P1-L1	CA60	3	5.0	8	75	600
	CA50	4	10.0	4	VAR	VAR
P2-L1	CA60	5	5.0	8	75	600
	CA50	6	10.0	4	VAR	VAR
P3-L2	CA60	7	5.0	31	75	2325
	CA50	8	10.0	4	307	1228
P4-L2	CA60	9	5.0	31	75	2325
	CA50	10	10.0	4	307	1228
P4-L1	CA60	11	5.0	8	75	600
	CA50	12	10.0	4	VAR	VAR
P5-L1	CA60	13	5.0	8	75	600
	CA50	14	10.0	4	VAR	VAR
P6-L2	CA60	15	5.0	31	75	2325
	CA50	16	10.0	4	307	1228
P7-L2	CA60	17	5.0	31	75	2325
	CA50	18	10.0	4	307	1228
P7-L1	CA60	19	5.0	8	75	600
	CA50	20	10.0	4	VAR	VAR
P8-L1	CA60	21	5.0	8	75	600
	CA50	22	10.0	4	VAR	VAR
P9-L2	CA60	23	5.0	31	75	2325
	CA50	24	10.0	4	307	1228
P10-L2	CA60	25	5.0	31	75	2325
	CA50	26	10.0	4	307	1228
P10-L1	CA60	27	5.0	8	75	600
	CA50	28	10.0	4	VAR	VAR
P11-L1	CA60	29	5.0	8	75	600
	CA50	30	10.0	4	VAR	VAR
P12-L2	CA60	31	5.0	31	75	2325
	CA50	32	10.0	4	307	1228

RESUMO DO AÇO

AÇO	DIAM (mm)	C.TOTAL (m)	PESO + 10% (kg)
CA50	10.0	132.2	89.6
CA60	5.0	234	39.7
PESO TOTAL (kg)			
CA50		89.6	
CA60		39.7	


Volume de concreto (C25) = 1.05 m³
Área de forma = 21.83 m²



DEPARTAMENTO ESTADUAL DE TRÂNSITO

RODOVIA MS 080, KM 10 - CEP 79114-901
Tel.: 67 3368.0100 - Campo Grande - MS
<http://www.detrans.ms.gov.br>

DIEMI - DIVISÃO DE ENGENHARIA, MANUTENÇÃO E INFRAESTRUTURA



OBRA	ART / RRT	LOCAL
Amp. da Agência do DETRAN de Chapadão do Sul - MS	0000000000000	Chapadão do Sul - MS
CONTEÚDO DA PRANCHA	DATA INICIAL	QUADRO DE ÁREAS
VIGAS DE COBERTURA, PILARES E CORTES	25/11/2019	36,60 m²
AUTOR DO PROJETO		FOLHA
Eng. Bruno Oliveira Gonçalves CREA 16312 D/MS		03/03