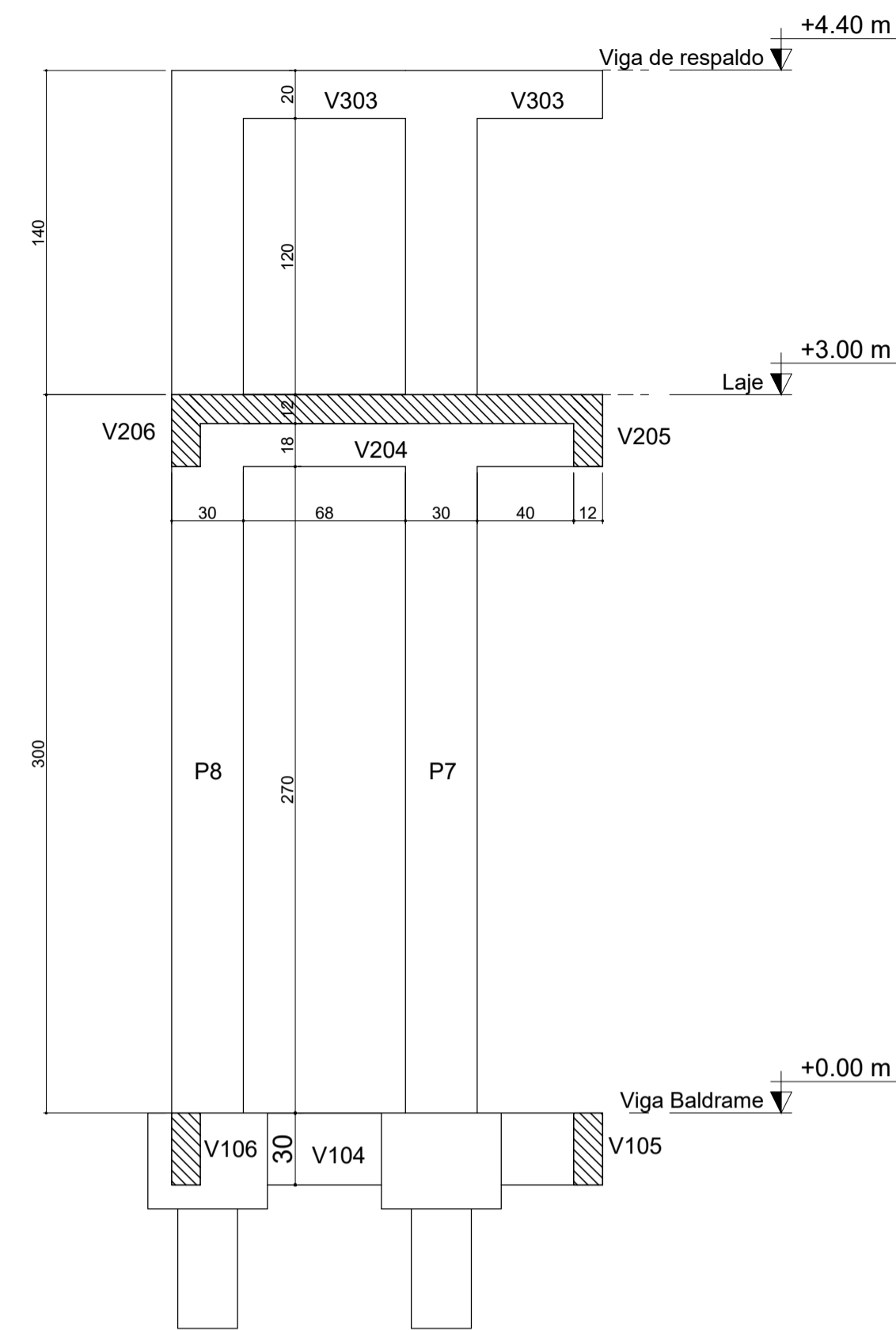


Corte AA  
Esc 1:25



Corte BB  
Esc 1:25

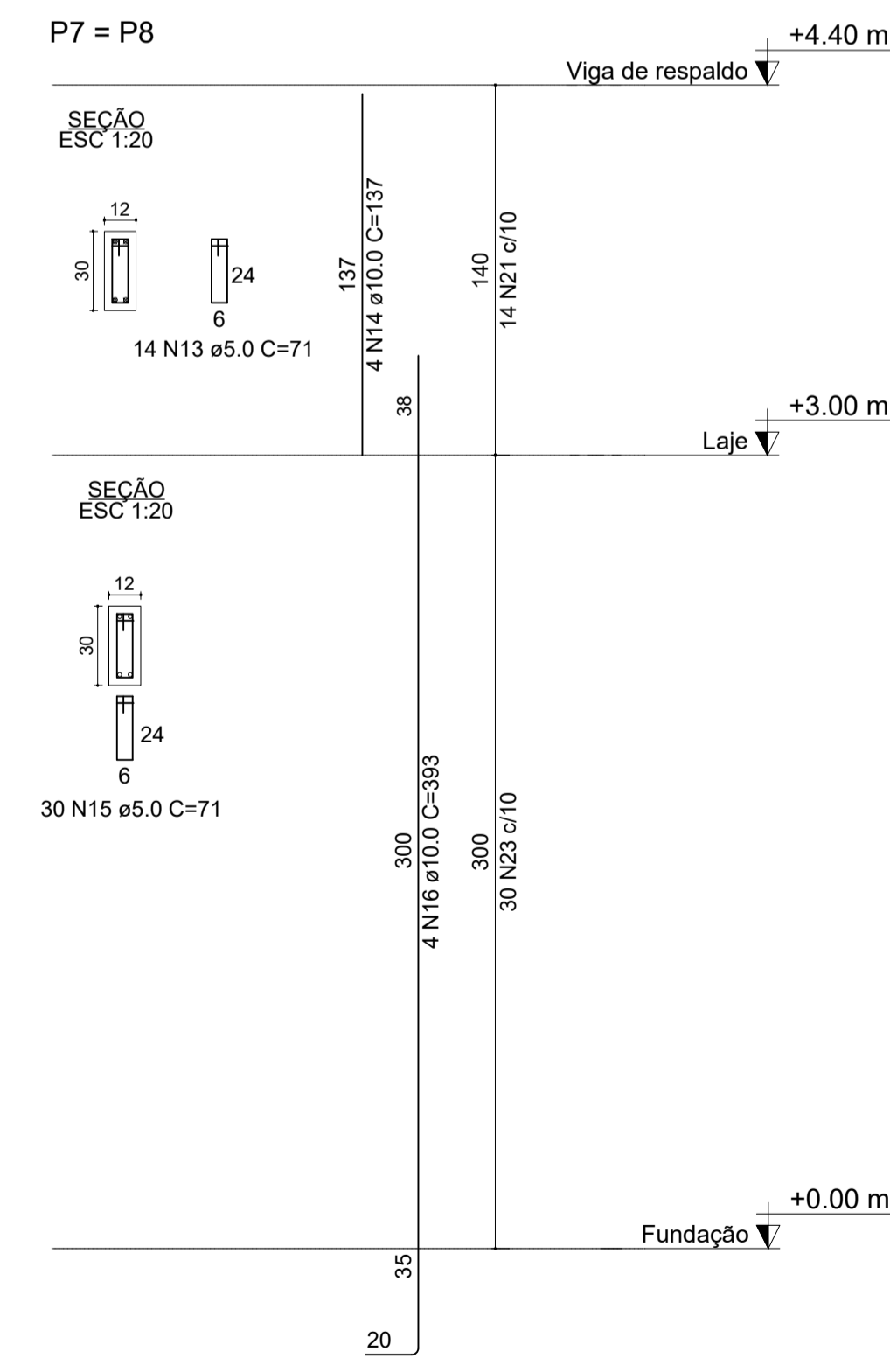
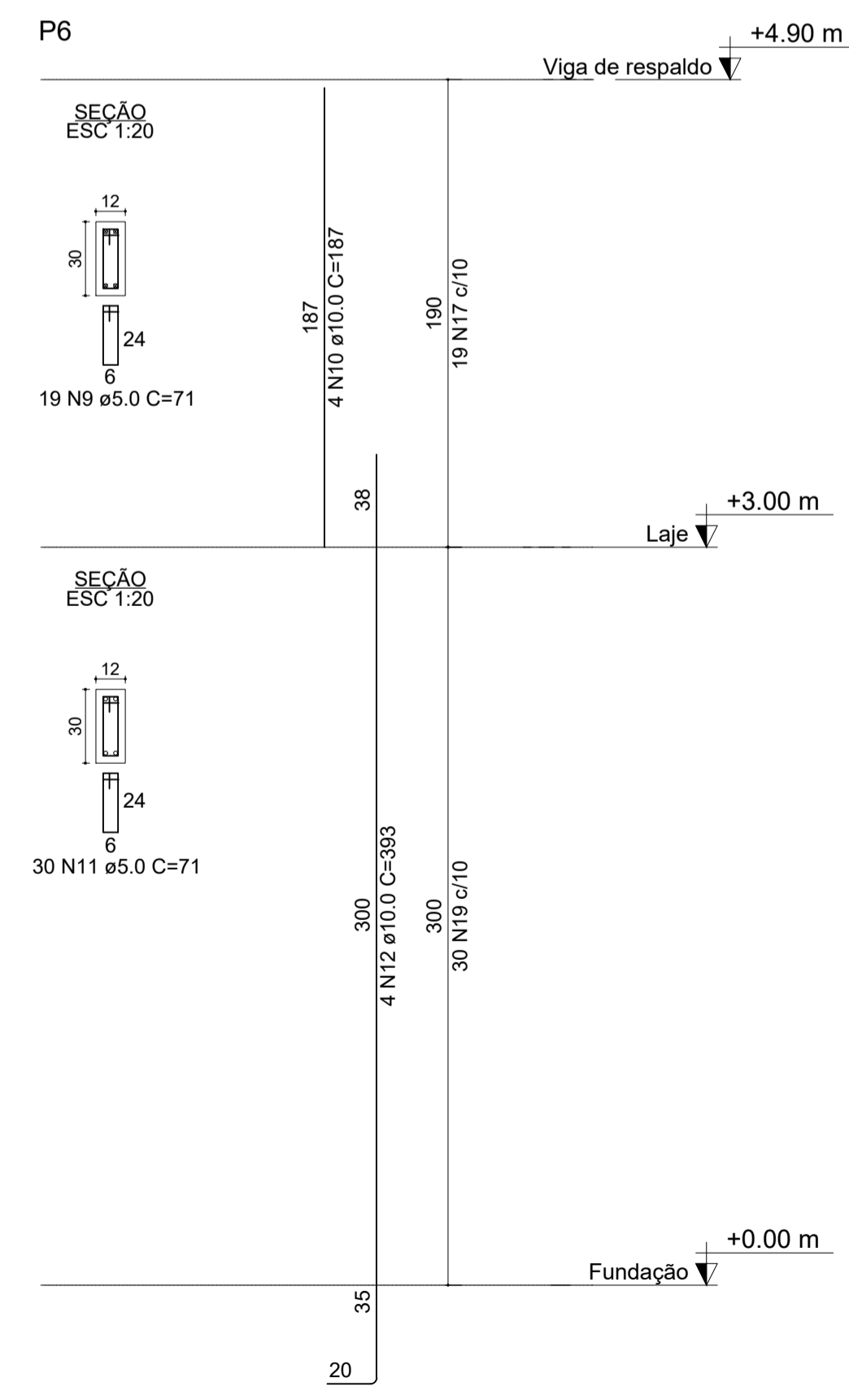
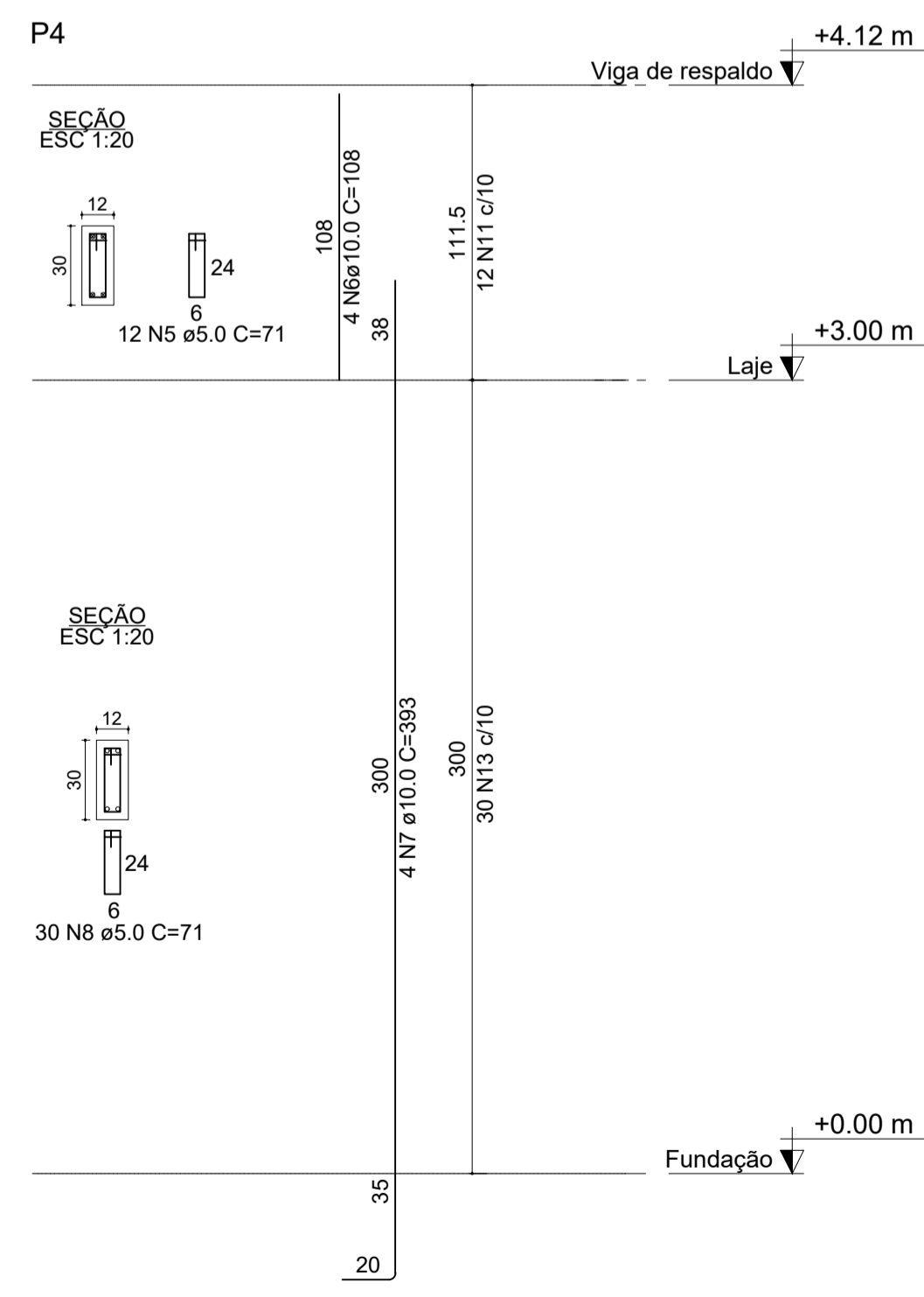
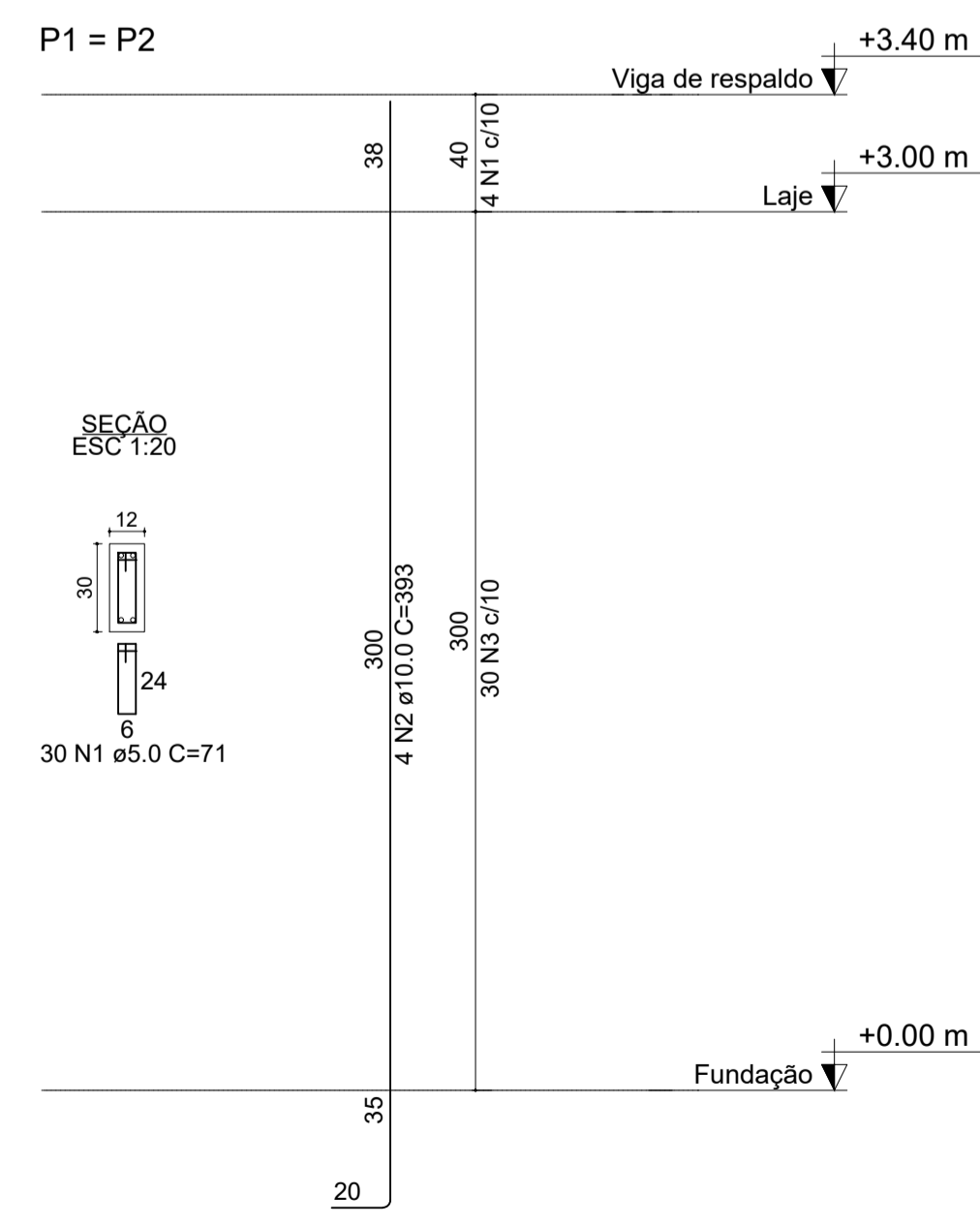
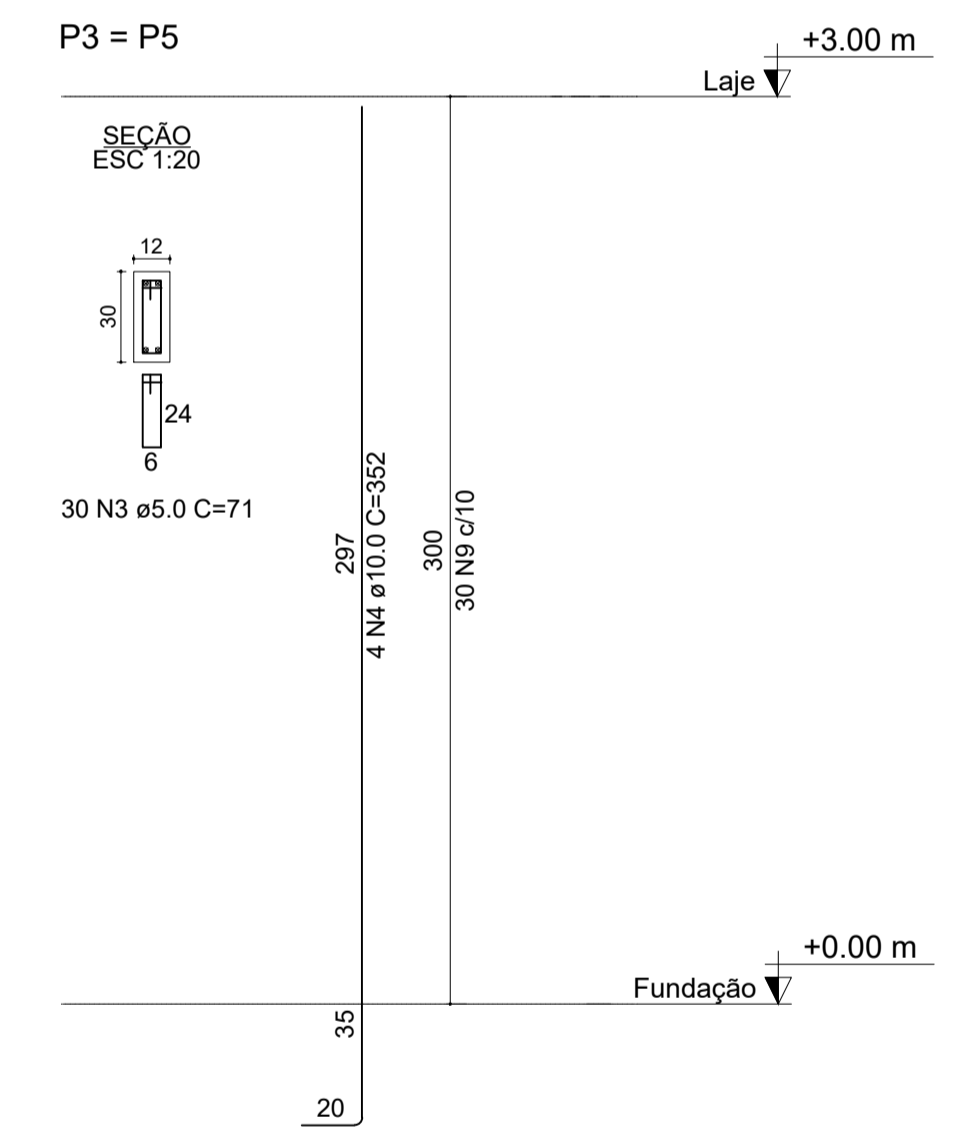
RELAÇÃO DO AÇO

ELEMENTO	AÇO	N	DIAM (mm)	QUANT	C.UNIT (cm)	C.TOTAL (cm)
P1=P2	CA60	1	5.0	60	71	4260
	CA50	2	10.0	8	393	2344
P3=P5	CA60	3	5.0	60	71	4260
	CA50	4	10.0	8	352	2816
P4	CA60	5	5.0	12	71	852
	CA50	6	10.0	4	108	432
	CA50	7	10.0	4	303	1212
	CA60	8	5.0	30	71	2130
P6	CA60	9	5.0	19	71	1349
	CA50	10	10.0	4	187	748
	CA60	11	5.0	30	71	2130
	CA50	12	10.0	4	393	1572
P7=P8	CA60	13	5.0	28	71	1988
	CA50	14	10.0	8	137	1096
	CA60	15	5.0	60	71	4260
	CA50	16	10.0	8	393	3144

RESUMO DO AÇO

AÇO	DIAM (mm)	C.TOTAL (m)	PESO + 10% (kg)
CA50	10.0	133.7	90.8
CA60	5.0	212.3	36.0
PESO TOTAL (kg)			
CA50		90.8	
CA60		36.0	

Volume de concreto (C-25) = 1.10 m³  
Área de forma = 25.72 m²



PILARES  
Esc 1:25

**DEPARTAMENTO ESTADUAL DE TRÂNSITO**  
RODOVIA MS 080, KM 10 - CEP 79114-901  
Tel.: 67 3368.0100 - Campo Grande - MS  
<http://www.detrans.ms.gov.br>

**DETRAN-MS** DIEMI - DIVISÃO DE ENGENHARIA, MANUTENÇÃO E INFRAESTRUTURA

OBRA	ART / RRT	LOCAL
Ampliação da Agência do DETRAN de Costa Rica - MS	0000000000000	Costa Rica - MS
CONTEÚDO DA PRANCHA	DATA INICIAL	QUADRO DE ÁREAS
PILARES CORTE AA E CORTE BB	27/07/2020	10,53 m²
AUTOR DO PROJETO	FOLHA	
Eng. Bruno Oliveira Gonçalves CREA 16312 D/MS	02/03	